


**G4INDO**  
Geo-data for crop insurance in Indonesia

***User design requirements G4INDO IT platform  
in support of implementing  
Indonesia's crop insurance policy***

Jakarta, 19 March 2015

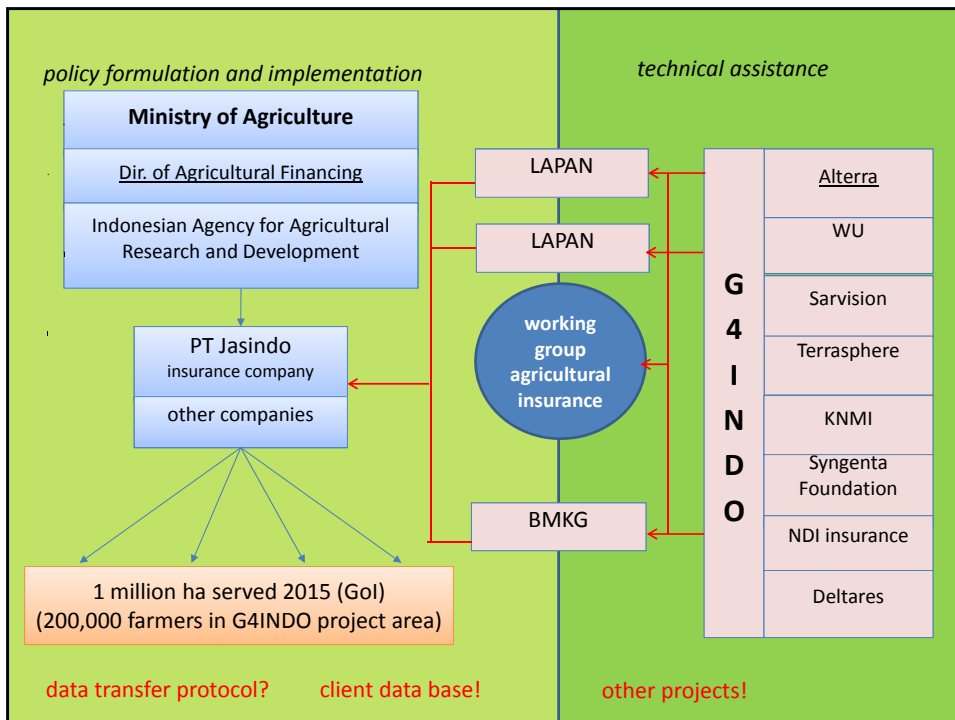
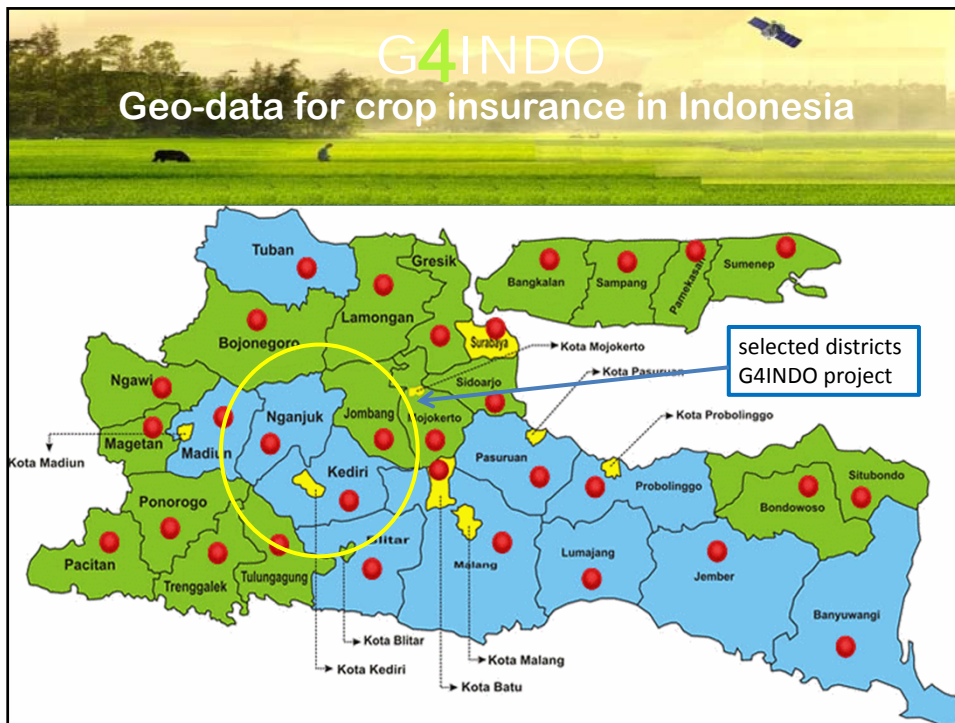
**Aart Schrevel**  
Alterra, Wageningen UR

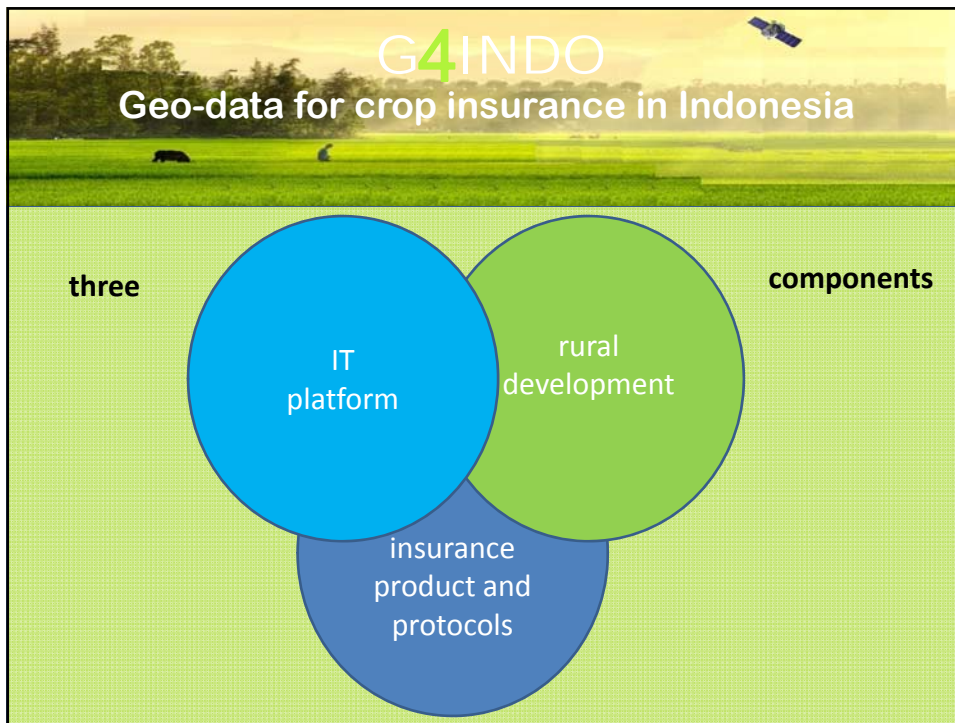


**G4INDO**  
Geo-data for crop insurance in Indonesia


**Objectives:**

- Assist MoA with implementation of crop insurance policy
- Achieve increase in income from crops
- Develop applied technology with LAPAN, BMKG, and MoA*
- Upgrade existing cropping calendar





- 
- G4INDO**  
Geo-data for crop insurance in Indonesia
- rural development (on-going)**
- socio-economic base line survey (Brawijaya University)
  - demand for insurance survey (field work in project districts)
- The slide features the same background image as the first slide. It contains the G4INDO logo and title at the top, followed by the heading 'rural development (on-going)' and a bulleted list of two survey activities.



**G4INDO**  
**Geo-data for crop insurance in Indonesia**

**insurance products and procedures**

- 3% premium of Rp. 6m investments in crop cultivation
- 80% subsidized, 20% paid by farmer
- payout at <75% crop loss, 10 days time access
- flood and droughts, as well as certain pests
- through Farmers' Groups (Kelompok Tani)



**G4INDO**  
**Geo-data for crop insurance in Indonesia**

**IT PLATFORM**

*User design requirements G4INDO IT platform  
in support of implementing  
Indonesia's crop insurance policy*

**I WISH YOU ALL A PLEASANT AND FRUITFUL WORKSHOP**